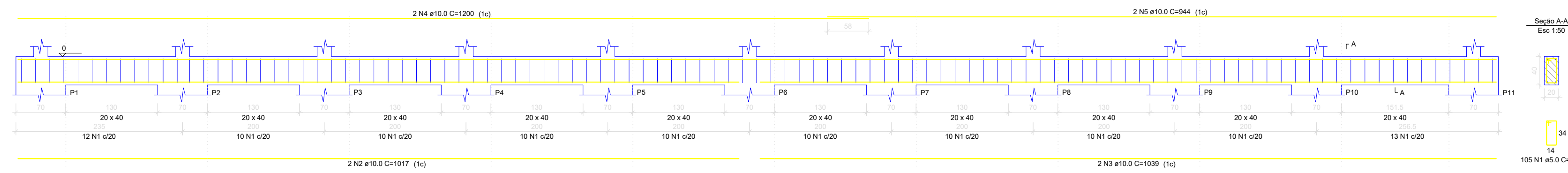
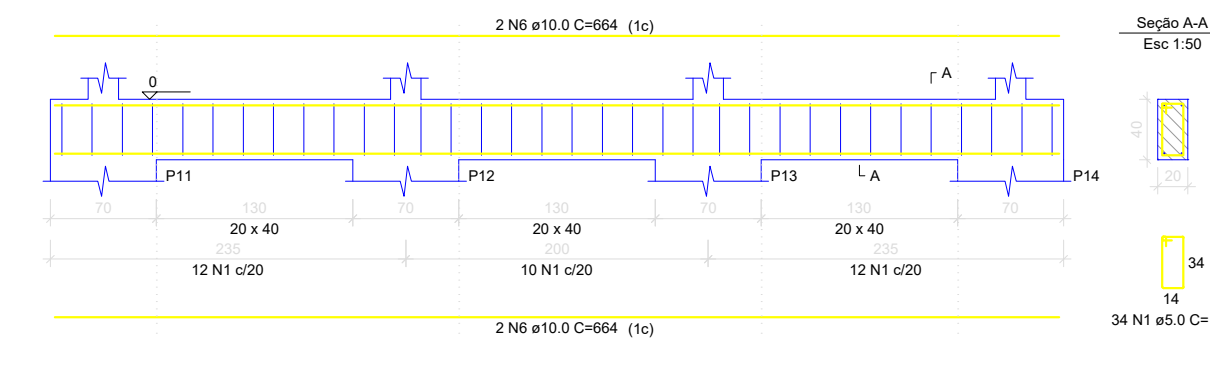


VB1 (20 x 40)
Esc 1:50



VB2 (20 x 40)
Esc 1:50



RELAÇÃO DO AÇO

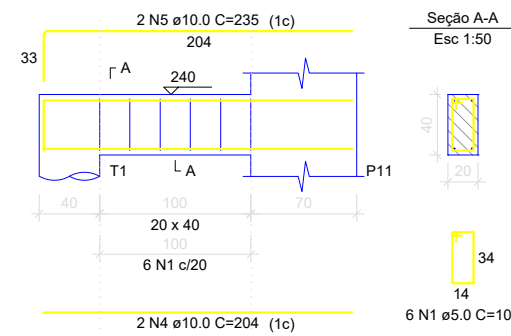
ACAO	N	DIAM (mm)	QUANT	C TOTAL (mm)	C TOTAL (cm)
N1	1	5,0	105	107	1070
N3	2	10,0	2	1039	2078
N4	2	10,0	2	1200	2400
N6	2	10,0	2	664	1328
N7	2	10,0	2	664	1328
TOTAL			111	5148	5148

RESUMO DO AÇO

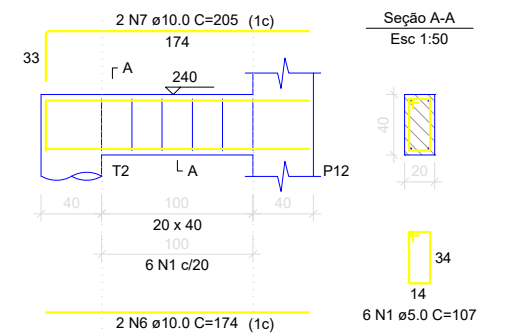
ACAO	DIAM (mm)	C TOTAL (mm)	QUANT	%N	UNIT
N1	5,0	107	105	14	12 m
N3	10,0	1039	2	3	12 m
N4	10,0	1200	2	3	12 m
N6	10,0	664	2	3	12 m
N7	10,0	664	2	3	12 m
TOTAL			111	100	

Volume de concreto (C-20) = 1,37 m³

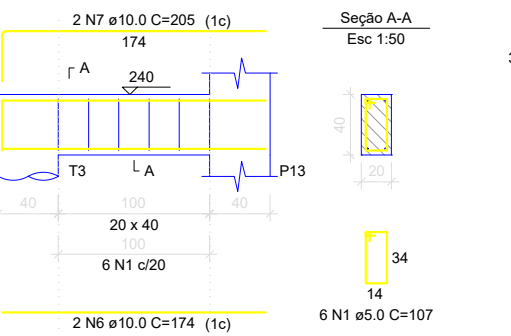
VB3 (20 x 40)
Esc 1:50



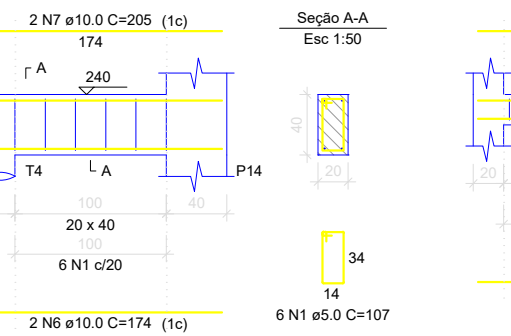
VB4 (20 x 40)
Esc 1:50



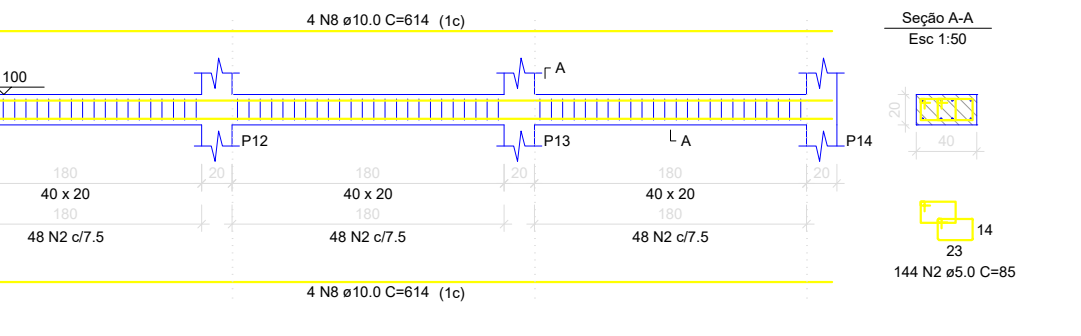
VB5 (20 x 40)
Esc 1:50



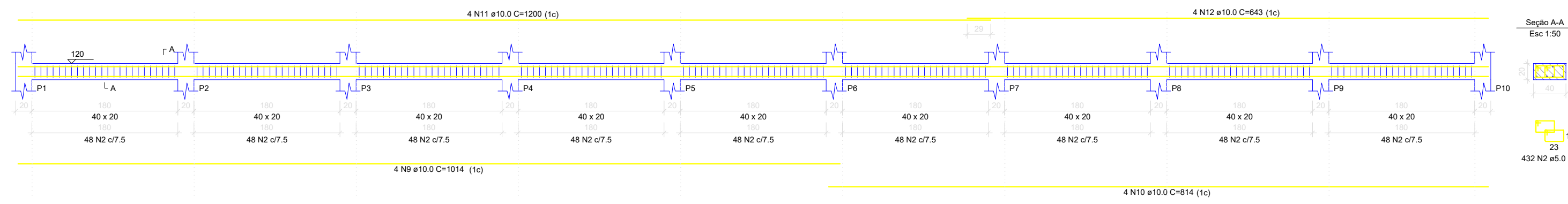
VB6 (20 x 40)
Esc 1:50



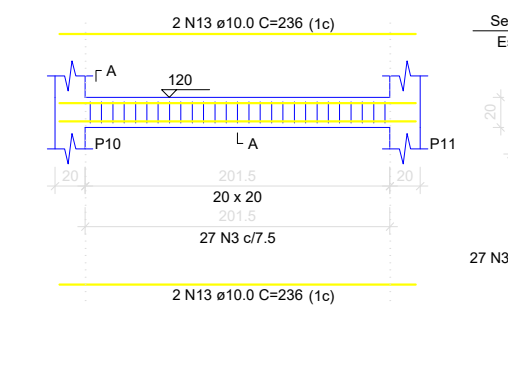
VM1 (40 x 20)
Esc 1:50



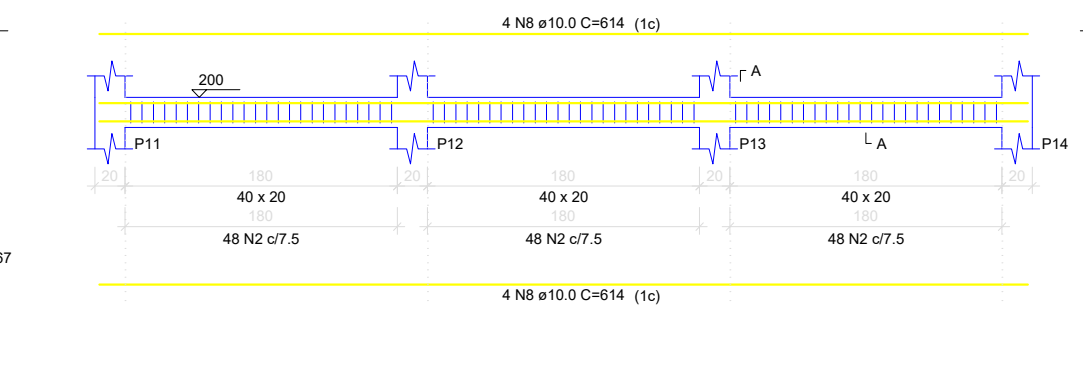
VM2 (40 x 20)
Esc 1:50



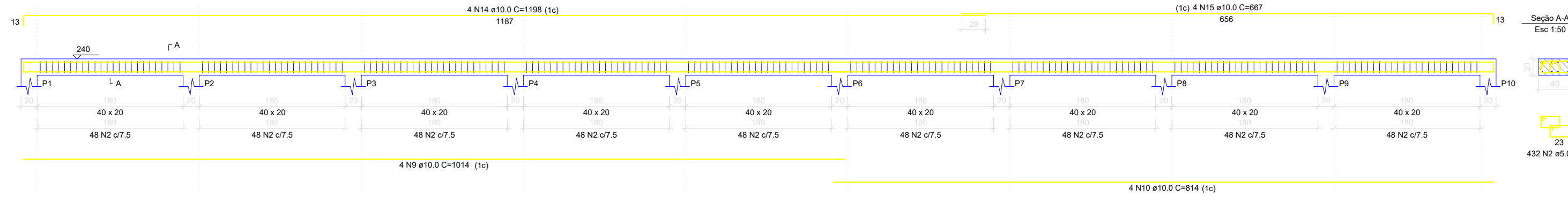
VM3 (20 x 20)
Esc 1:50



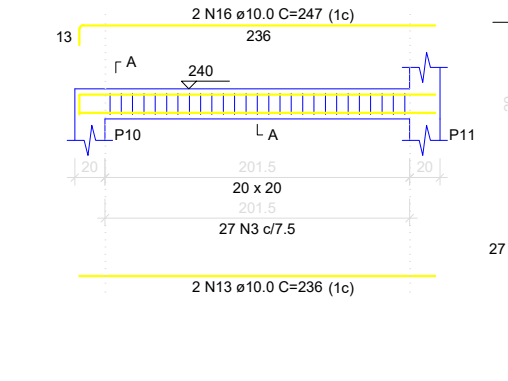
VM4 (40 x 20)
Esc 1:50



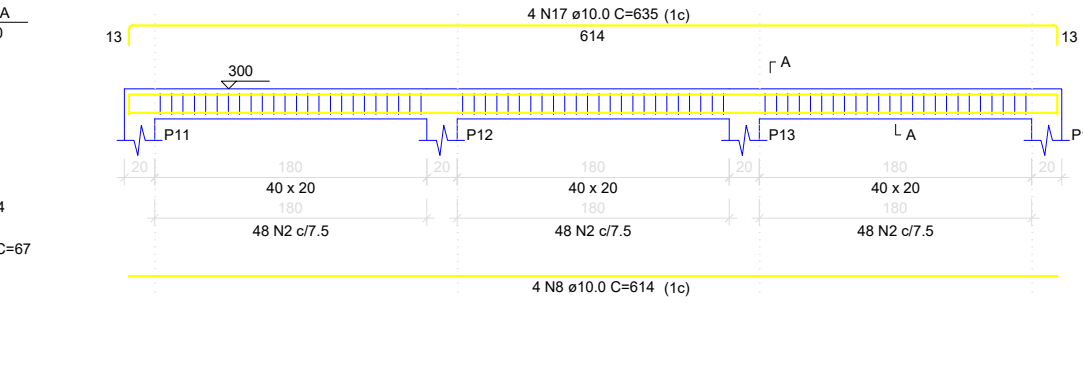
VM5 (40 x 20)
Esc 1:50



VM6 (20 x 20)
Esc 1:50



VM7 (40 x 20)
Esc 1:50



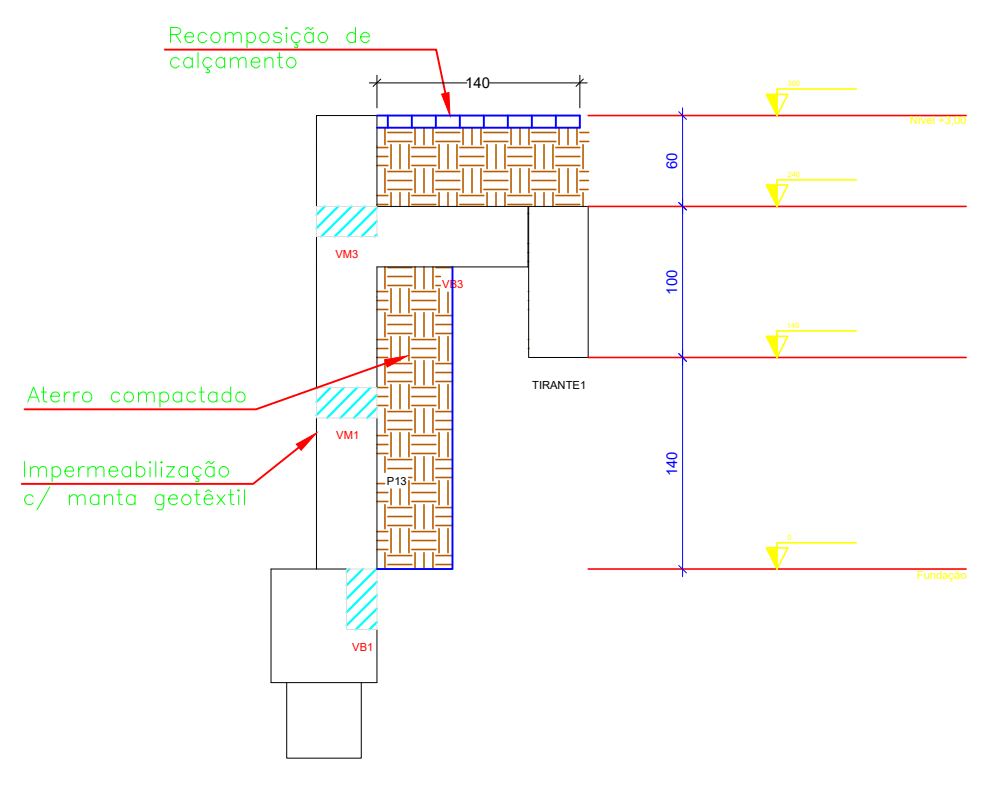
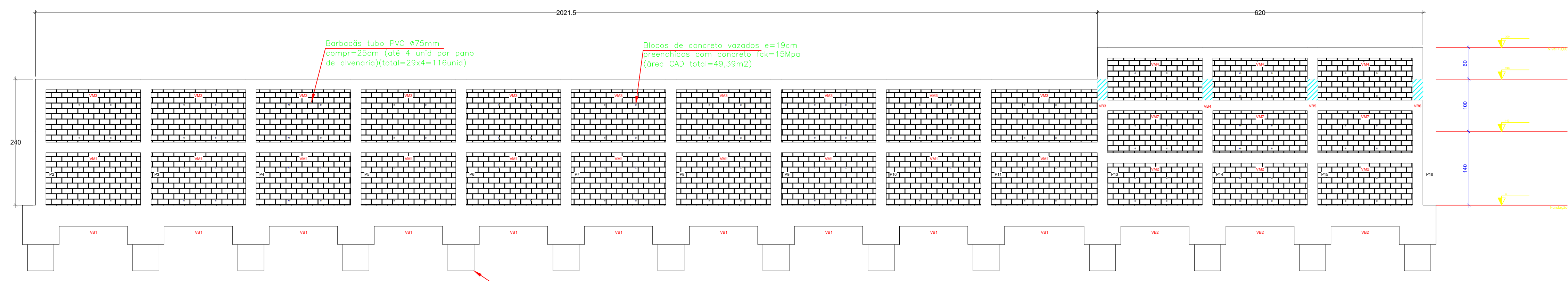
RELAÇÃO DO AÇO

ACAO	N	DIAM (mm)	QUANT	C TOTAL (mm)	C TOTAL (cm)
N1	1	5,0	105	107	1070
N2	1	5,0	105	107	1070
N3	2	10,0	2	1039	2078
N4	2	10,0	2	1200	2400
N5	2	10,0	2	235	470
N6	2	10,0	2	174	348
N7	4	10,0	4	205	820
N8	4	10,0	4	614	2456
N9	4	10,0	4	614	2456
N10	4	10,0	4	814	3256
N11	4	10,0	4	1200	4800
N12	4	10,0	4	643	2572
N13	2	10,0	2	236	472
N14	4	10,0	4	1014	4056
N15	4	10,0	4	814	3256
N16	2	10,0	2	247	494
N17	4	10,0	4	635	2540
TOTAL			107	4320	4320

RESUMO DO AÇO

ACAO	DIAM (mm)	C TOTAL (mm)	QUANT	%N	UNIT
N1	5,0	107	105	14	12 m
N2	5,0	107	105	14	12 m
N3	10,0	1039	2	3	12 m
N4	10,0	1200	2	3	12 m
N5	10,0	235	2	3	12 m
N6	10,0	174	2	3	12 m
N7	10,0	205	4	5	12 m
N8	10,0	614	4	5	12 m
N9	10,0	614	4	5	12 m
N10	10,0	814	4	5	12 m
N11	10,0	1200	4	5	12 m
N12	10,0	643	4	5	12 m
N13	10,0	236	2	3	12 m
N14	10,0	1014	4	5	12 m
N15	10,0	814	4	5	12 m
N16	10,0	247	2	3	12 m
N17	10,0	635	4	5	12 m
TOTAL			107	100	

Volume de concreto (C-20) = 4,30 m³
Área da forma = 45,41 m²



Corte A-A
Esc 1:50

Corte B-B
Esc 1:50

ProSen Projetos & Serviços de Engenharia Ltda.

Prefeitura Municipal Santa Cruz do Escalvado
ESTADO DE MINAS GERAIS
Administração 2021-2024

Execução de Muro de Arrimo e serviços diversos em trecho da Rua das Mercês

OBJETO: NO OBRERAÇÃO

DATA: Fev / 24

RESPONSÁVEL TÉCNICO PELO PROJETO: **Eng. Civil WILSON DIAS DA FONSECA JR.** VREA: 61.924 / D

PREFEITO MUNICIPAL: **GILMAR DE PAULA LIMA** CPF: 697.293.526-15

CONTÉM: **Detalhes Diversos** ESCALA: Indicadas

LOCALIZAÇÃO: **Rua das Mercês, B. Mercês, Sta. Cruz Escalvado** FOLHA: 03/03

PROGRAMA: **RECURSOS FEDERAIS**